



# Events At Ovolo Southside



ovolo  
southside



**Industry,  
Artistry,  
Creativity,  
Interactivity,  
Let's *GIG* it ON!!**

G.I.G. is a versatile space with all the tech, toys and talent you need to stage concerts, parties, expos, cocktails, fashion shows, photo shoots, or any sort of 'gig' in a dynamic, industrial setting unique to Hong Kong.

The 375 sqm venue is everything and anything you want it to be. Whether your creativity calls for a space with an 'underground' feel, or one that projects mind-blowing visuals on the G.I.G room's 1800 x 220cm projection wall, the space is sure to make your next event standout in one of the most hip and upcoming destinations in Hong Kong.

**FEATURES**



State-of-the-art AV System with 7.1 Surround Sound



Stunning 18 meter video projection wall



Turntable Rotating Stage



AC Proof Staging Curtains



Convenient 3.5m² Road Level Access



Full Service Bar & Catering Available



Ovolo Free Super Speed Wi-Fi





## EXPERIENCE

Music  
Concerts



Fashion  
Shows



Product  
Launches



Art  
Exhibitions



We've hosted some cool events,  
and can't wait to do yours!

including...

- Photo Shoots
- Film Screenings
- After Parties
- Banquet Dinners
- Conferences & Seminars
- Health & Wellness Events
- Award Ceremonies

... And much more!

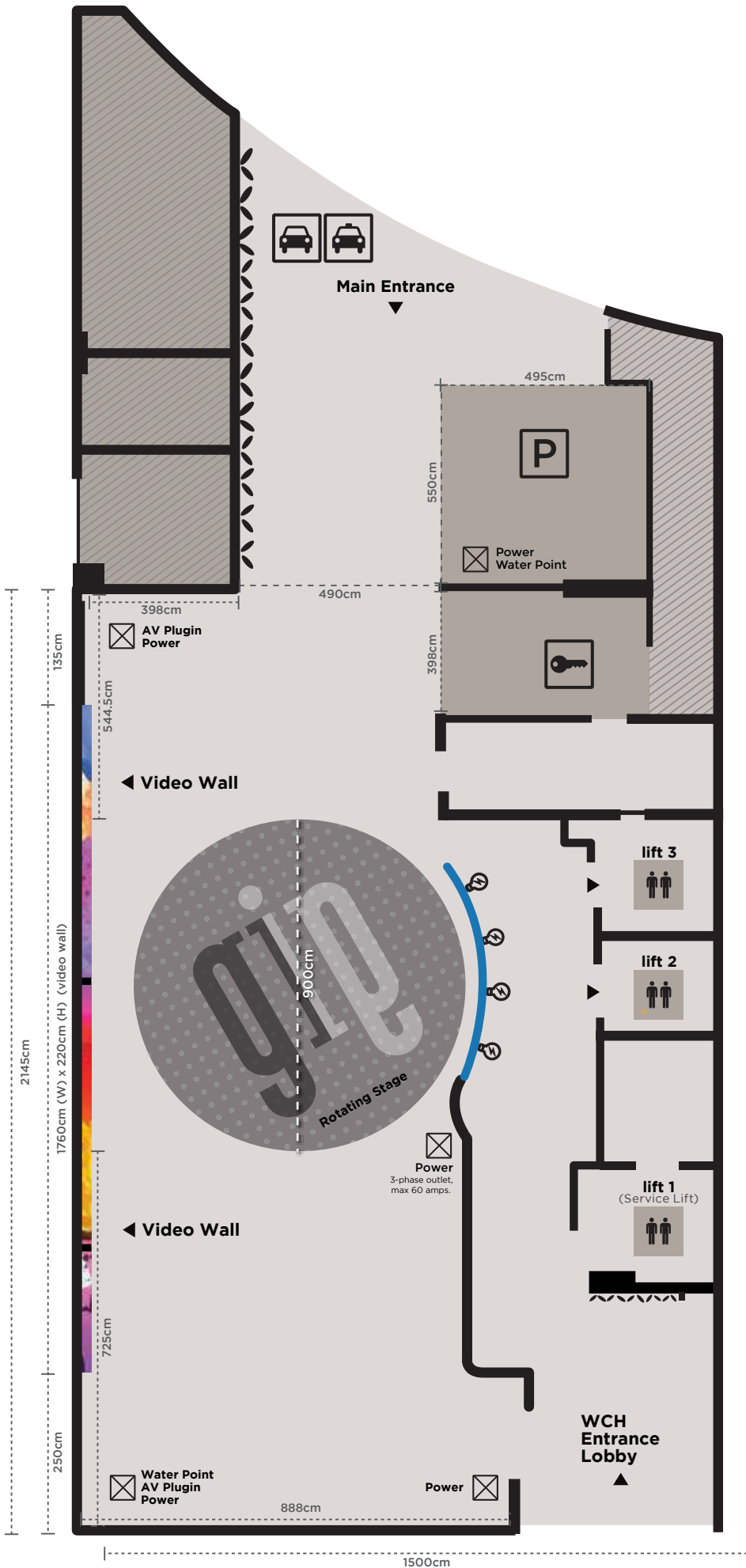
gip

YOUR  
TURN?

Holiday  
Parties



# FLOOR PLAN



**Key:**



Taxi & Private Car Lay-By



Parking

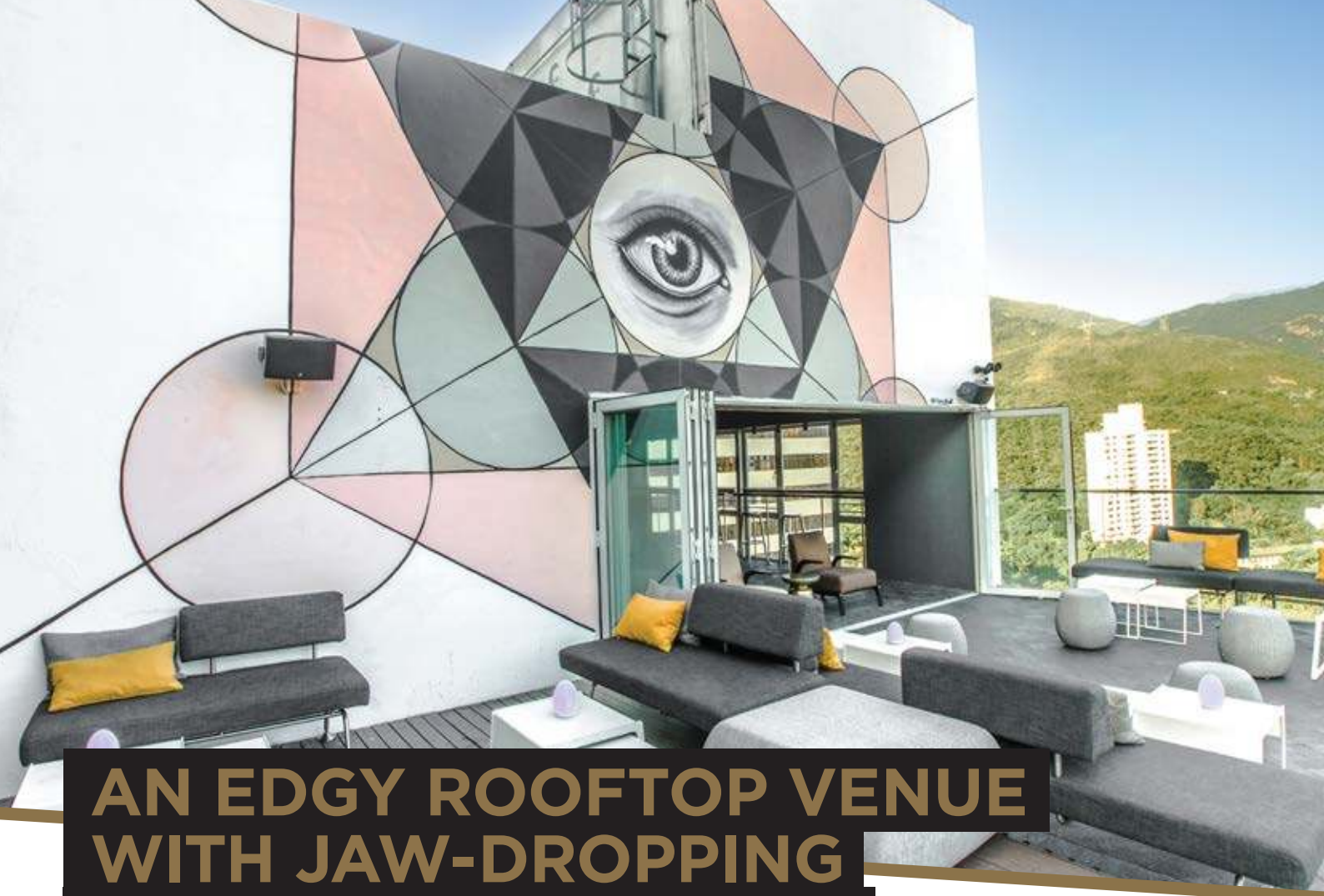


Luggage Room

<b>Dimensions</b>	25m x 15m / 82ft x 49ft
<b>Size</b>	375m <sup>2</sup> / 4036.5ft <sup>2</sup>
<b>Ceiling Height</b>	3.5m / 11.5ft
<b>Max Capacity</b>	200 freestanding persons*
<b>Power</b>	Single / Three-Phase

\*Depending on event configuration.





## AN EDGY ROOFTOP VENUE WITH JAW-DROPPING VIEWS FOR ALL YOUR EVENT NEEDS!

### **ABOVE**

High atop Ovolo Southside lies ABOVE, our partially-indoor, partially-outdoor rooftop venue with a built-in top-shelf bar. Along with the gorgeous view of Aberdeen in all its expansive glory, is that well-renowned Ovolo service catering to all your demands for an out-of-this-world event. Whether it's an evening out with 80 of your closest friends, or a corporate seminar you want to include with a bit of height, make ABOVE your go-to venue.

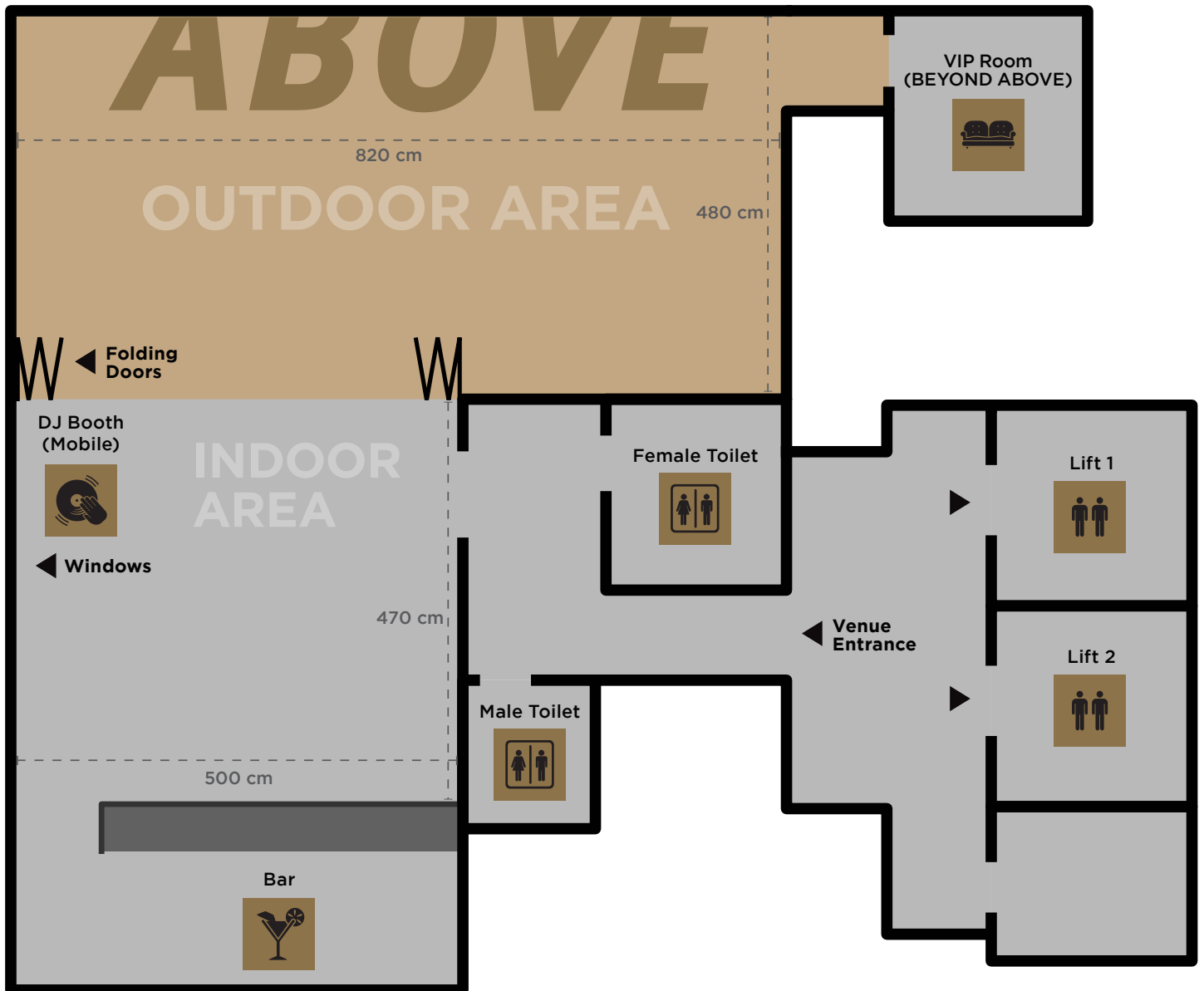
#### **GREAT FOR**

- Birthday Parties
- Quiet Night with your Partner
- Networking Events
- (Corporate) Seminars
- Board Meetings
- Product Presentations
- Sporting Demonstrations (on the rooftop lawn!)



Landscape of Southern District

## FLOOR PLAN



## SPECIFICATIONS

Indoor	Outdoor	VIP Room
500 cm x 480 cm (16.4 ft x 15.4 ft)	820 cm x 480 cm (26.9 ft x 15.7 ft)	220 cm x 220 cm (7.2 ft x 7.2 ft)
<b>Size</b>	<b>Size</b>	<b>Size</b>
23.5m <sup>2</sup> (252.6 ft <sup>2</sup> )	39.4 m <sup>2</sup> (422.3 ft <sup>2</sup> )	4.8 m <sup>2</sup> (52 ft <sup>2</sup> )
<b>Max Capacity</b>	<b>Max Capacity</b>	<b>Max Capacity</b>
16 Seats	47 Seats	4 Seats





# SUCCULENT, LIP-SMACKING, TABLE-THUMPING, TWEET-ALL-YOUR-FRIENDS- ABOUT-IT MEALS.

## CIRQLE

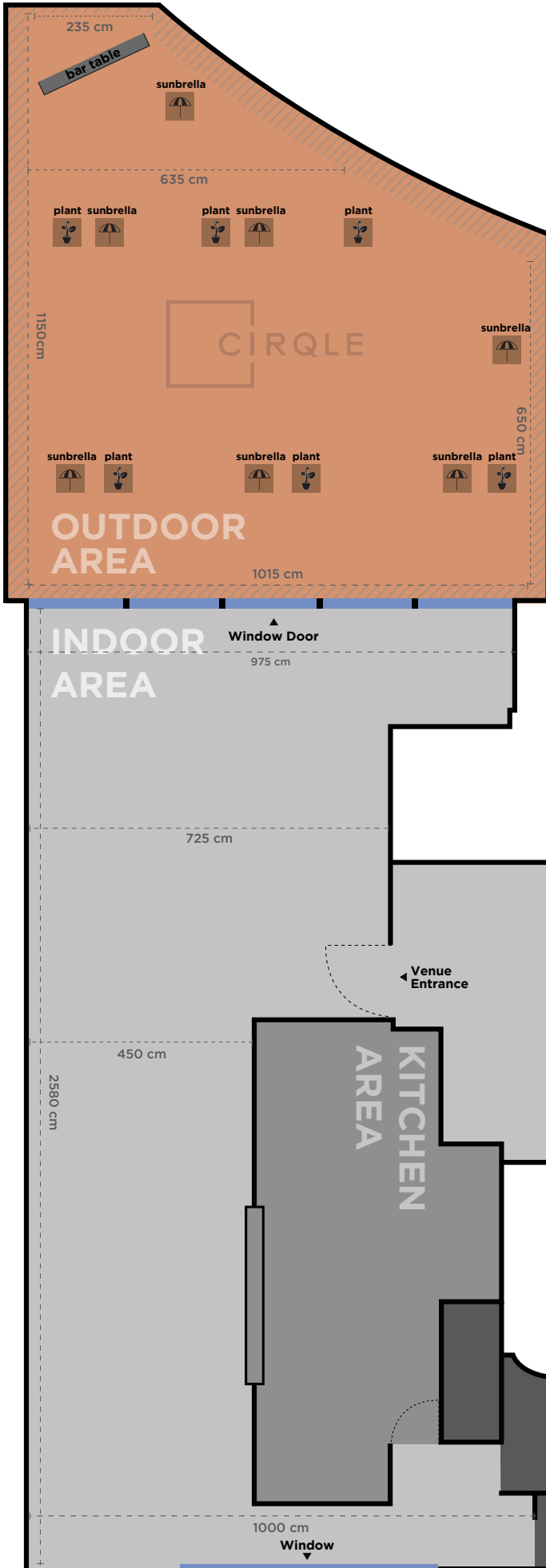
Nestled on the fourth floor of Ovolo's Southside is CIRQLE, serving Modern European cuisine. Perfect for hiring the venue out for a big party, or even a romantic dinner with your partner. Highlights of this venue include its open kitchen and expansive outdoor terrace, guaranteed to light up your evening and make your guests wonder... How on earth have I not been here before?

### GREAT FOR

- Romantic dinners
  - Birthday parties
  - Business lunches
  - Vegetarian Mondays
  - Hangover-curing Sunday brunches
- ...Ahhh you're spoiled for choice!!!



# FLOOR PLAN



# SPECIFICATIONS

## Dimensions (Outdoor)

1015cm x 1150cm / 33.3ft x 37.7ft

## Size

116.7m<sup>2</sup> / 382.9ft<sup>2</sup>

## Max Capacity

Normal Table : 56  
Seats: 56

## Dimensions (Indoor)

1000cm x 2580cm / 33ft x 84.6ft

## Size

258m<sup>2</sup> / 846.5ft<sup>2</sup>

## Max Capacity

Community Table: 24  
Normal Table : 48  
Seats: 72





# WHATEVER YOUR BUSINESS GOALS, MAKE IT B.i.G

When Business Is Good, you need great, out-of-this-world ideas to take things to the next level. So make it happen somewhere B.i.G. Ovolo Southside's B.i.G space offers the perfect opportunity to get your brightest minds together and workout ideas to take your business to the next level.

If you're having an event in other areas of the hotel, add B.i.G to the mix for a place to take VIPs, store additional equipment or even to just take powernaps between sets. The choice is yours, but the venue is B.i.G.



## EQUIPMENT

- Wireless Projection
- Bose 5.1 Surround Sound System
- Flip Chart and Stationery
- Cable TV
- Refreshment Station
- Blu-Ray DVD Player
- Complimentary WiFi
- Free Minibar
- Glassboard with Markers
- Xbox and Games

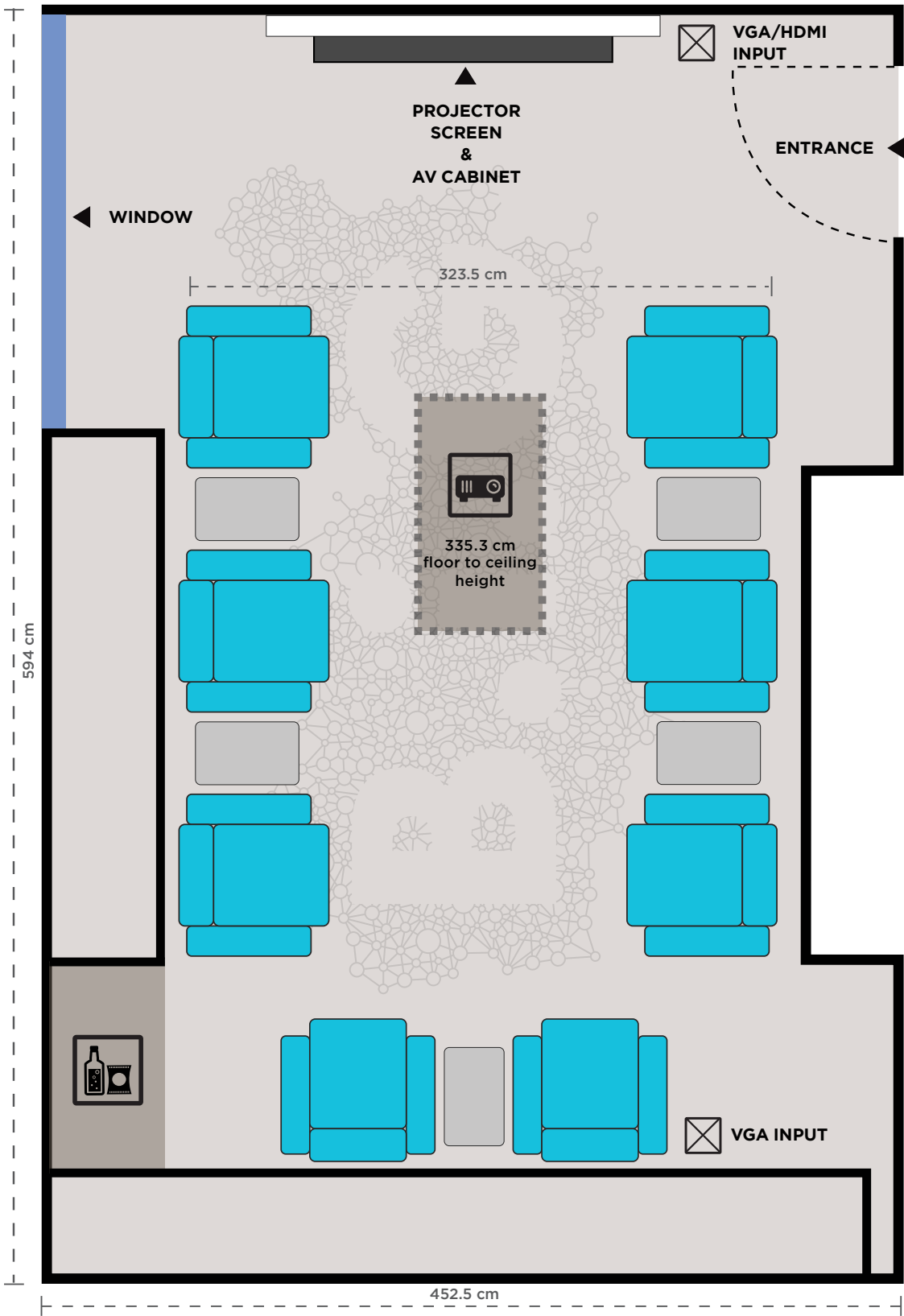
## GREAT FOR

- Think Tank Sessions
- Business Presentations
- Makeup / Changing Room
- Training Sessions
- Executive Interviews
- Exam Room
- Cosmetic Workshops
- Movie Screening
- Product Demonstrations
- Focus Groups

## REFRESHMENTS

- Coffee Breaks
- Lunch Packages
- Dinner Packages
- Half-Day and Full-Day Packages

# FLOOR PLAN



## Key:



MINI BAR



CEILING PROJECTOR



## LOCATION

Located in Ovolo Southside in Wong Chuk Hang, Hong Kong's hip emerging arts district tucked in classic industrial buildings and likened by many to New York City's famed Meatpacking District. Access to the city centre is minutes away thanks to the MTR South Island Line and Aberdeen tunnel, so have the best of both worlds in SAR's most talked about hidden gem district.



## CONTACT

**OVOLO SOUTHSIDE**  
G/F, 64 Wong Chuk Hang Road  
Aberdeen, Hong Kong

T: +852 3460 8100  
E: [events.southside@ovologroup.com](mailto:events.southside@ovologroup.com)  
[ovolohotels.com](http://ovolohotels.com)

--- From Pok Fu Lam

--- From Causeway Bay



Combine with other Southside venues for a vertical event!







o v o l o

southside